

A photograph of a bright, circular room with a curved wall of large, multi-paned windows. The room has a light-colored wooden floor and a white door with a glass panel. A small table with two chairs is set up in the center. A radiator is visible along the wall. The text "MARY WARD HOUSE" is overlaid in large white letters.

MARY WARD HOUSE

CONFERENCE & EXHIBITION
CENTRE



Our Office

5 - 7 Tavistock Place
London, WC1H 9SN
United Kingdom

Central London venue
providing unique and inspiring
spaces for events

Contact us

02073879681

INFO@MARYWARDHOUSE.COM



www.marywardhouse.com

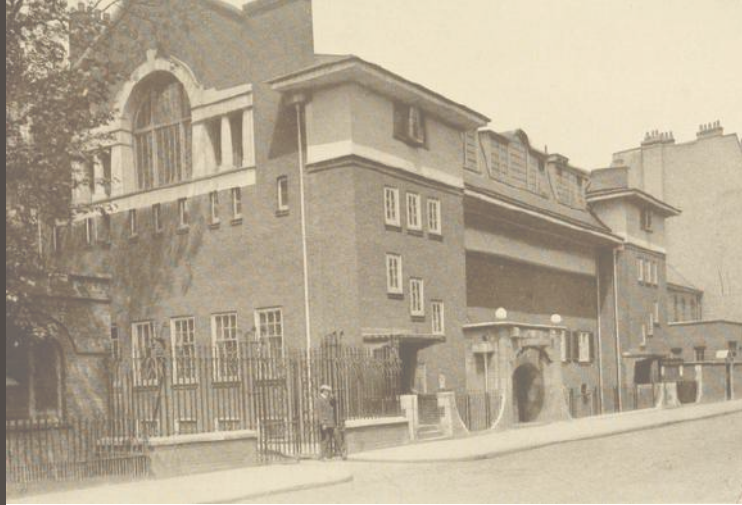


OUR VENUE

Mary Ward House is a Stunning Conference Centre located in Central London, Bloomsbury, and within walking distance of Euston, Kings Cross and St Pancras transport hubs.

Our Conference and Meeting Room Space offers event managers and organisers over 13 different unique spaces and includes a stunning garden and courtyard.

Each finely proportioned room has its own unique character and ambience, from the distinctive library to the extensive great hall.



OUR HISTORY

Mary Ward House is a fascinating Grade I Listed building, built in 1898 and financed by the wealthy philanthropist Passmore Edwards.

Mary Ward, the novelist and social reformer, was the inspiration behind the endeavour to provide a centre of training, care and entertainment for the less fortunate in society. The institution of settlement proposed to restore the contact between classes by providing a building various neighbourhoods where middle-class professionals would live.

It was this inspirational backing which led to the planning and building of what is today referred to as Mary Ward House.

OUR VISION

Mary Ward House has a long history of making a valuable contribution to society and the local community.

Since the opening of its doors in 1898, our Company, along with its stewards in succession, has had philanthropy and social well-being as its central ethos.

This is the vision which served as the enabler of an ideal remains in place today as we seek to promote knowledge learning and communication.



First Floor



Mary Ward Hall

A central feature of Mary Ward House ever since its doors opened at the end of the 19th century, Mary Ward Hall is one of the most highly favoured and distinctive large conference rooms in London, offering an ideal space for AGMs, company training sessions, product launches, and corporate presentations.

Beyond business, the subtle splendour and impressive capacity of the Mary Ward Hall has been utilised to remarkable effect for weddings, art exhibitions, fashion shows, and exclusive event hire.

The Mary Ward Hall is crowned by a high ceiling that arches elegantly across the entire width of the room. When you first enter the space, you'll find it hard to prevent your eyes from being drawn slowly upwards to take in the full height of the room.

ROOM DIMENSIONS

Length 18.7 metres
Width 11.6 metres
Height 7.5 metres
Area 216.92 metres

ROOM CAPACITIES

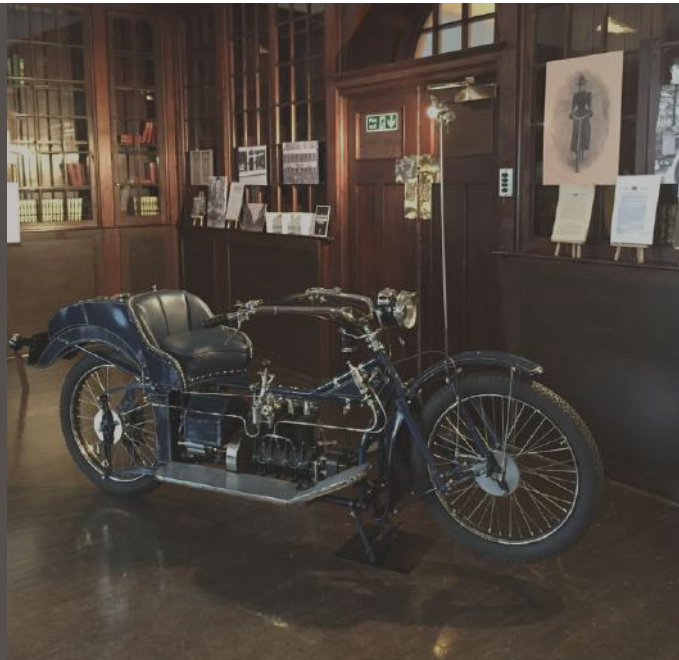
Cabaret:	220
Theatre:	350
Boardroom:	68
Classroom:	240
U-Shape:	86
Cocktail Party:	500
Fork Buffet(Standing):	400
Dinner (Sit Down):	220



Ground Floor



Dickens Library



One of the most unusual conference venues in Central London, the Dickens Library's extensive use of dark wood, period features, and traditional artwork has played host to several memorable conferences, exhibitions, corporate events and exclusive fashion shows.

Dark floorboards muffle your steps as you stroll inside, wood panelling across the walls reflects the natural light streaming in through large windows that reach almost from floor to ceiling, and wooden columns rise up to form a central arch that agreeably separates the room.

With wooden archway forming a natural focal point, the Dickens Library is an ideal conference venue hire, and the wide windows projecting views over Mary Ward House's stunning courtyard from the large bay section allows guests to socialise while taking in the unique aspect of the property.

ROOM DIMENSIONS

Lenght 9.4 metres
Width 8.94 metres
Height 4.2 metres
Area 84.03 metres

ROOM CAPACITIES

Cabaret:	50
Theatre:	54
Boardroom:	24
Classroom:	32
U-Shape:	28
Cocktail Party:	100
Fork Buffet(Standing):	80
Dinner (Sit Down):	60





Voysey Room



Showcasing a sought-after blend of openness and grandeur, with wonderful courtyard access and exceptional levels of natural light, the Voysey Room is one of the most distinct spaces within Mary Ward House, and it is an ideal conference room rental venue for individuals in search of access to a pleasant outdoor space.

Situated on the ground floor of the building, the Voysey Room is ringed with windows to deliver spectacular views across the courtyard. Lightly-hued solid wood flooring seems imbued with the abundance of natural light that enters the room.

A fireplace stands at the head of the room to provide a perfect place for speakers or conference heads. The high ceilings lend an elegant air to proceedings and ensure your space never feels too crowded when filled to capacity.

ROOM DIMENSIONS

Length 9.9 metres
Width 8.9 metres
Height 3.6 metres
Area 85.14 metres

ROOM CAPACITIES

Cabaret:	50
Theatre:	72
Boardroom:	30
Classroom:	42
U-Shape:	32
Cocktail Party:	100
Fork Buffet(Standing):	80
Dinner (Sit Down):	50





Lethaby Room



Like all rooms in Mary Ward House, the Lethaby Room cultivates its unique presence around a certain special feature. In this case, the two bow windows of the far wall are the first things you'll notice, both for their unique charm and the scenic views they offer over our garden.

The room's dimensions can accommodate multiple tables and chairs for smaller social events, dual rows of chairs for conferences and training sessions, and u-shaped desks for a large AGM. A wide counter running almost the whole length of the room allows for plenty of refreshments or training materials to be collected and stored for your convenience.

With garden outlook and fetching period features, the Lethaby Room is perfect for medium-sized groups searching for an upscale meeting room or conference venue hire, though the space is also ideal for smaller wedding receptions, product launches, and exhibitions.

ROOM DIMENSIONS

Length 14.5 metres
Width 5 metres
Height 3.3 metres
Area 72.5 metres

ROOM CAPACITIES

Cabaret:	70
Theatre:	100
Boardroom:	42
Classroom:	60
U-Shape:	45
Cocktail Party:	100
Fork Buffet(Standing):	80
Dinner (Sit Down):	70





Emerson Room



Classically styled, and yet with cool modern touches, the Emerson Room perfectly epitomizes everything people expect when searching for prestige meeting venues in London.

The first thing you'll notice is the high ceiling, which draws the eyes upwards along softly curving recessed arches towards pure white upper walls. With four large recessed windows facing you as you walk inside, plus a small crescent window above the doorways, there's an abundance of natural daylight flowing through the room.

A refreshingly offbeat event space, the Emerson Room is a popular Mary Ward House venue and one of the most memorable conference rooms in London. Commonly sought out for meeting venues, smaller AGMs, and training rooms, you'll also find the Emerson perfect for a smaller conference room or art exhibition.

ROOM DIMENSIONS

Length 7.5 metres
Width 6.76 metres
Height 3.6 metres
Area 50.7 metres

ROOM CAPACITIES

Cabaret:	28
Theatre:	36
Boardroom:	15
Classroom:	20
U-Shape:	18
Cocktail Party:	40
Fork Buffet(Standing):	40
Dinner (Sit Down):	30





Herschel Room



Blending the contemporary with the classical, the Herschel Room gives the period charm of the Mary Ward House a fresh and modern air. It's a smaller space that feels open and inviting thanks to high ceilings and unbroken floor space, so clients often consider it their first choice for a cosier training room hire or boardroom meeting venue.

Several expansive windows sit recessed along the exterior wall, with crescent windows arching just below the high roofline opposite them. Beyond the abundance of light they bestow, those high windows supply a valued sense of privacy often highly desirable for people within industries that value confidentiality, such as the healthcare industry.

The unique combination of strong natural light and wide open stretches of crisp white wall space has even seen the Herschel Room employed to fantastic affect for smaller art exhibitions.

ROOM DIMENSIONS

Lenght 9.6 metres
Width 5.1 metres
Height 3.76 metres
Area 48.96 metres

ROOM CAPACITIES

Cabaret:	40
Theatre:	50
Boardroom:	30
Classroom:	36
U-Shape:	34
Cocktail Party:	50
Fork Buffet(Standing):	50
Dinner (Sit Down):	50





Boardroom Room



The Boardroom is dedicated to the Passmore Edwards, a generous and kind hearted Philanthropist, who provided the funding to enable the realisation of an Ideal that was to become Mary Ward House.

The Room is West facing with an abundance of Natural Light beaming through three very large sash windows (all our rooms have light proofing / blackout options) It is ideally suited to small meeting of up to 26 people or as a syndicate room for larger conferences.

ROOM DIMENSIONS

Length 6.5 metres
Width 5.1 metres
Height 3.9 metres
Area 33.15 metres

ROOM CAPACITIES

Cabaret:	20
Theatre:	26
Boardroom:	15
Classroom:	20
U-Shape:	18
Cocktail Party:	30
Fork Buffet(Standing):	30
Dinner (Sit Down):	20



Lower Ground Floor



Brewer & Smith Room

Formally the gymnasium of the settlement, the Brewer & Smith is the second largest space within the venue and perhaps the most unique space. Delivering an exceptional level of natural light and spectacularly high ceilings, it's nestled within the lower ground floor of the building, creating a singularly quirky conference venue in London.

If the sky is overcast or the sun has set, steel supports run along the ceiling to anchor stage lights for favourable illumination.

The Brewer & Smith Room is a fantastic space for hosting art exhibitions, and it often serves as one of London's unique conference venues. Larger AGMs make particularly effective use of the room's generous capacity. Given the scarcity of windows looking directly onto the street, the Brewer & Smith room is also a popular option when privacy is required.

ROOM DIMENSIONS

Length 20.8 metres
Width 8.4 metres
Height 7.7 metres
Area 174.72 metres

ROOM CAPACITIES

Cabaret:	120
Theatre:	237
Boardroom:	50
Classroom:	150
U-Shape:	62
Cocktail Party:	300
Fork Buffet(Standing):	250
Dinner (Sit Down):	120





Arnold Room



The Arnold Room blends cosmopolitan urban flair with rich period accents, crafting an eclectic space and fostering one of the UK's most recognisable exhibition venues, ideally-suited around fashion shows, showcases, and other exhibitions.

Exposed brickwork is the defining feature. It runs across the whole far wall and makes a wide central column that helps the room stand out. A large bay section bathes the room in light through several large windows, with sunlight reflecting from the pale parquet floor and light brickwork.

The Arnold Room also tends to attract clients who put a premium on privacy thanks to its high-mounted windows.

ROOM DIMENSIONS

Length 9.6 metres
Width 6.1 metres
Height 3.5 metres
Area 58.6 metres

ROOM CAPACITIES

Cabaret:	40
Theatre:	50
Boardroom:	18
Classroom:	30
U-Shape:	24
Cocktail Party:	100
Fork Buffet(Standing):	90
Dinner (Sit Down):	40





Morris Room

The extensive exposed brickwork and eye-catching arches of the Morris Room bring the period touches of Mary Ward House to their full potential, and the space acts as a natural counterpoint to the similarly striking Arnold Room.

Ideal for more interactive training sessions, and one of the most wonderful exhibition venues in London, the Morris Room can also be combined with the Arnold Room and the Brewer & Smith Room to have the whole of the lower ground floor at your disposal.

Naturally segmented into separate sections by columns and arches, the Morris Room possesses its own unique flow, feeling more dynamic than its already generous capacity would suggest. Several clusters of chairs can be set up without ever making the room feel either overcrowded or busy, and each group will feel as if they have their own intimate space in which to work.

ROOM DIMENSIONS

Length 10.6 metres
Width 8.4 metres
Height 4.2 metres
Area 89.04 metres

ROOM CAPACITIES

Cabaret:	30
Theatre:	42
Boardroom:	20
Classroom:	35
U-Shape:	15
Cocktail Party:	100
Fork Buffet(Standing):	70
Dinner (Sit Down):	40



SUSTAINABILITY

Mary Ward House recognizes that environmental responsibility is integral to producing world-class products. In manufacturing operations, Mary Ward House and its Suppliers will minimize adverse effects on the community, environment and natural resources while safeguarding the health and safety of the public.



The environmental standards are:

- 1.1. Environmental Management SystemMary Ward House and its Suppliers will have an Environmental Management System (“EMS”) in accordance with ISO 14001 or equivalent. The EMS will be implemented and functioning. Third-party registration is strongly recommended but not required unless requested by Mary Ward House.
- 1.2. Environmental Permits and ReportingMary Ward House and its Suppliers will maintain and keep current all required environmental permits (e.g. discharge monitoring), approvals and registrations and Mary Ward House and its Suppliers will follow their operational and reporting requirements.
- 1.3. Hazardous SubstancesMary Ward House and its Suppliers will identify and manage chemicals and other materials posing a hazard to human health, human safety or the environment to ensure their safe handling, movement, storage, use, recycling or reuse and disposal.
- 1.4. Wastewater and Solid WasteMary Ward House and its Suppliers will characterize, monitor, control and treat as required prior to discharge or disposal all wastewater and solid waste generated from operations, industrial processes and sanitation facilities.
- 1.5. Air EmissionsMary Ward House and its Suppliers will characterize, monitor, control and treat as required prior to discharge all air emissions of volatile organic chemicals, aerosols, corrosives, particulates, ozone depleting chemicals and combustion by-products generated from operations.
- 1.6. Product Content RestrictionsMary Ward House and its Suppliers will adhere to all applicable laws, regulations and customer requirements regarding prohibition or restriction of specific substances, including labeling for recycling and disposal.
- 1.7. Resource EfficiencyMary Ward House is committed to using resources efficiently, supporting renewable power and purchasing high quality carbon offsets. Mary Ward House wants Suppliers who share our commitment to the environment and who conduct their business in a similar way. Supplier must work to reduce consumption of resources, including raw materials, energy and water, throughout all aspects of the product life cycle (e.g. product design, manufacturing process, packaging design, transportation, product use and product end-of-life management).
- 1.8. Materials DisposalMary Ward House and its Suppliers will manage and dispose of all materials in accordance with applicable laws, rules, regulations and directives, and in an environmentally responsible and secure manner, protective of the environment. At Mary Ward House’s request, Supplier will provide documentary evidence acceptable to Mary Ward House that Supplier has managed and disposed of materials in accordance with this Supplier Code.

"Thanks very much for making things run so smoothly for our Public Health Training Day yesterday. All the attendees were impressed - very helpful staff, lovely surroundings, tasty refreshments and everything went without a hitch!"

- NHS

"Thank you so much for all your support with our event a couple weeks ago. It all went really well and we received lots of positive feedback on the venue. You and your team were so lovely to work with, so thank you"

- Health Education England

"Nothing appeared to be too much trouble. Despite our relentless requests at unreasonable times you took care of everything splendidly and delivered with a smile. The team are a real credit to Mary Ward House."

- John Lewis

"Thank you so much for your hospitality at our event on Friday. We received excellent feedback regarding the venue and the amazing catering and staff."

- North London Cancer Network

"Marvellous! Superb service. Look forward to running course at the venue!"

- NHS Westminster Primary Care trust



Our



Testimonials



"Our second event with you in as many months and again you were everything I needed the venue to be. I am delighted at the service that I continue to receive."

- Google

"Just a quick email to say a big thank you for such a well-run day. Everything was just spot on."

- Siemens

"I am writing to say a huge thank you for all of your advice and assistance in the lead up to and during our Awards night. We have had wonderful feedback from both our guests and sponsors. The décor and entertainment were highly praised and people were particularly impressed with the quality of the food. The evening was a huge success and we wouldn't have been able to do it without you."

- International Exhibitions

"Everything was absolutely spot on, the venue was amazing, staff friendly and efficient, food delicious and general atmosphere wonderful. The fact that people were still chatting and networking at 8.30pm shows what a good time people had! I will definitely, 100% be booking more events at Mary Ward House - I have already recommended it to many colleagues here so expect an influx of NHS bookings!"

- NHS London

OUR CLIENTS

CAPITA



AdvanceHE

NHS
Health Education England



BBC



UKRI

NHS
England

